

Elinor Wray Award

The Elinor Wray Award was instituted in 1981 to honour Miss Elinor Wray who is regarded as the Founder of the speech pathology profession in Australia. The inaugural Award was made in February 1983.

The Elinor Wray Award is granted for outstanding contribution to the profession of speech pathology. The contribution of the nominee is essentially clinical or project oriented and will encompass one or more of the following areas:

- Innovations in diagnostic, assessment or treatment procedures
- Promotion of speech pathology to government, the community or to other professionals
- Research
- Student training.



Sue McAllister is this year's recipient of the Elinor Wray award. Sue has made outstanding contributions to the speech pathology profession in the areas of research, student education, professional development, quality improvement, maintenance of professional standards, leadership and promotion of the profession. Sue has engaged her scientific rigour and critical thinking to develop a valid and reliable tool for assessing students' development and entry level competence - a first of its kind in Australia and internationally. In collaboration with three university speech pathology programs, and with the support of Speech Pathology Australia, the tool COMPASS® - Competency Assessment in Speech Pathology, was published and made available to Australian University courses in 2006.

Sue's contributions through the development of COMPASS® are far greater than the finished product. Her leadership and commitment to the project have resulted in both a streamlined national implementation for speech pathology, inter-professional interest and international collaboration.

Sue and her colleagues' work has been recognised through the awarding of two national learning and teaching prizes: Carrick Citation for Outstanding Contributions to Student Learning in 2006 and Australian Award for University Teaching - Award for Programs that Enhance Learning. These awards have significantly raised the profile of speech pathology as an academic discipline and as a discipline with expertise in learning and teaching.

Community Contribution Award

The Community Contribution Award is granted by the Association to recognise outside agencies who have made a significant and valuable contribution to speech pathology. The award is open to any agency outside of speech pathology that has contributed to the promotion of the profession.



The Andrew Dean Fildes Foundation was established in 1996 to provide services to children throughout Australia with Language-Learning Disabilities. The foundation is a non-profit organisation founded by Andrew Fildes who has a Language-Learning Disability himself. Andrew works tirelessly in a voluntary capacity to make a difference in the lives of children with Language-Learning Disabilities. Since its inception, the work of the Foundation has provided more than \$8.5 million in services and enriched the lives of more than 3,500 children who have benefited from the Screening Programs, Comprehensive Assessments, Specialised Education and Intensive Multidisciplinary Treatment Programs. In excess of 4,000 families, teachers and teachers' aides have benefited from workshops and information sessions offered through the Foundation.

In addition the foundation has offered more than 370 student university placements, providing these students with valuable clinical and practical experience, along with a fuller appreciation for language-learning disabilities. The Andrew Dean Fildes Foundation was recognised for its significant contribution to the community and promotion of speech pathology services.



Recognition Of Service

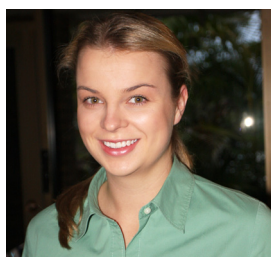
The Recognition of Service award is granted by the Association to members in recognition of ongoing, valuable and voluntary service to the Association at either a National or Branch level.



Kim Brookes received the Recognition of Service award in acknowledgement of her contribution to the Western Australian Branch since 2000. Kim has led the Continuing Professional Development (CPD) committee for 9 years and took on the role of Conference Convenor for the 2006 National Conference. She was instrumental in developing the WA CPD Video Lending Library which now forms an integral component of the National CPD Lending Library, and has forged many positive working relationships with interstate and international speakers. She has worked collaboratively with National Office in the creation and appointment of the inaugural CPD Coordinator in WA, has been tireless in her contribution through Branch meetings and forums, and continues to contribute to the Branch with energy, enthusiasm and professionalism.

Rookie of the Year

The Rookie of the Year award is granted by the Association to a new graduate practising member in recognition of ongoing, valuable and voluntary service to the Association at either a National or Branch level. In 2009 Grow Words have supported the presentation of this award, through the provision of a gift voucher.



Jessica Molloy has been an active member of the Western Australian Branch since her election as a student member in 3rd Year. She made significant contributions in this role, through promoting the Association to other students, and later as a member of the Practice Workplace and Government portfolio. Following graduation, she has taken on the role of Branch Vice President and Treasurer and has continued to contribute to the Association with enthusiasm and as an outstanding 'rookie' of the profession.

Fellowship

Fellowship of Speech Pathology Australia is a public professional honour awarded to a person with considerable experience, responsibility and standing within the speech pathology profession.



Cecilia Pemberton has been a member of the Association for the past 34 years, since arriving in Australia from the United Kingdom. She has contributed to the Association as an advisor in her specialty area of voice and as a mentor, as well as assisting with the organisation of the 1993 National Conference in Darwin.

Cecilia has participated in several of formal research projects, including a number of longitudinal studies investigating whether women's voices have changed over the past 50 years, resulting in international media interest and an invitation to present at the British Voice Association Conference in 1993.

She recently led a research project evaluating the Voice Care for Teachers Tool and investigating the prevalence of voice disorders in teachers in a number of NSW schools.

Cecilia has maintained her passion for clinical excellence and in 1987 established a joint ENT and Speech Pathology clinic at The Royal Melbourne Hospital. Her clinical projects have included coordinating the Characteristics of Normal Larynxes under Fibrescopic and Stroboscopic Examination: An Australian Perspective.

She has supported the education of her colleagues through the establishment of a number of Voice interest Groups. Cecilia is transferred to Fellowship in recognition of her sustained contribution to the profession through her commitment to and promotion of best practice intervention in the area of voice, her contribution to research and innovation, and her willingness to share her knowledge with her colleagues.

Student Awards

The following students were acknowledged for their academic and clinical excellence:

- | | |
|---|---|
| <ul style="list-style-type: none">• Charles Sturt University• Curtin University• Flinders University• James Cook University• Macquarie University• University of Newcastle• University of Queensland UG• University of Queensland Masters• University of Sydney UG• University of Sydney Masters | <ul style="list-style-type: none">Katia FisherBrooke RendellErin ParkerFrancesca BlythAlanna RichardsElizabeth DePlaterJade StockillSophie GudgeonJacqueline McKechnieEe Laine Lua |
|---|---|

